



ROYAL FORKLIFT (SUZHOU) CO.,LTD.

Factory site : North of Wei'er Road,Guoxiang Town,
Wuzhong Area, Suzhou City, Jiangsu Province, China
Tel: +86 512 65916195
Web: www.ryforklift.com
Email: info@ryforklift.com



Royal Forklift (Suzhou) Co., Ltd. reserves the right to make any changes without notice concerning colors, equipment or specifications detailed in this brochure, or to discontinue individual models. The configuration of trucks, delivered may differ slightly from those in brochures.



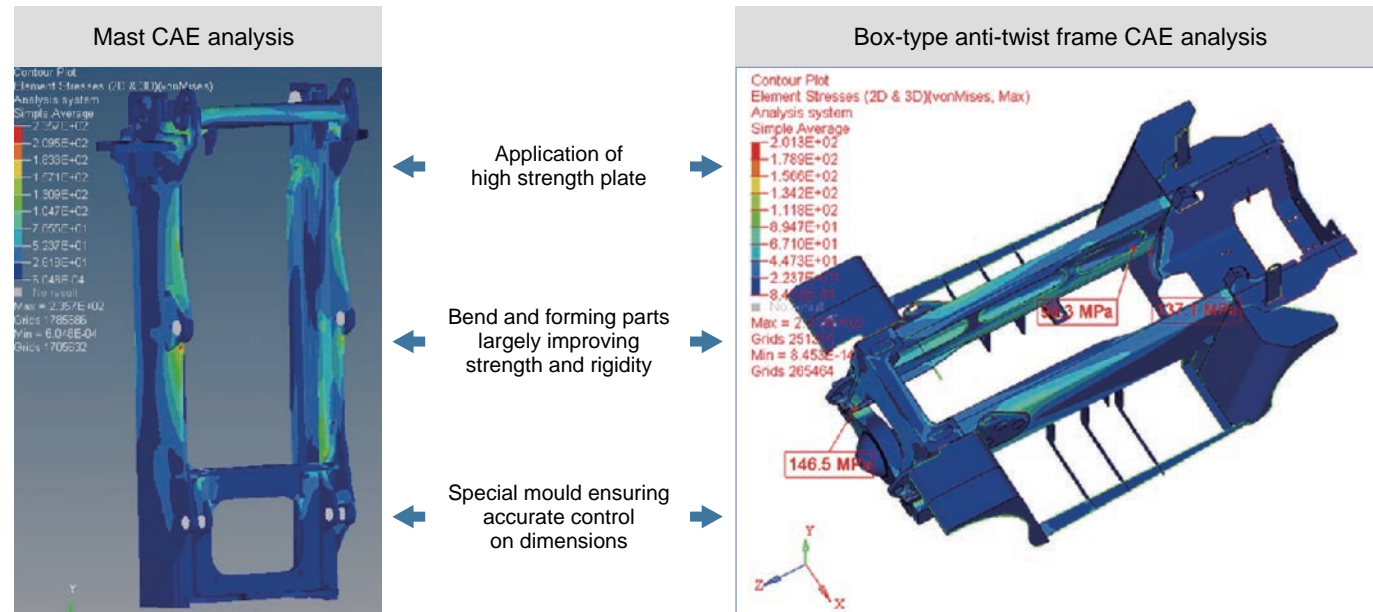
12-16T INTERNAL COMBUSTION COUNTERBALANCE FORKLIFT TRUCK



www.ryforklift.com

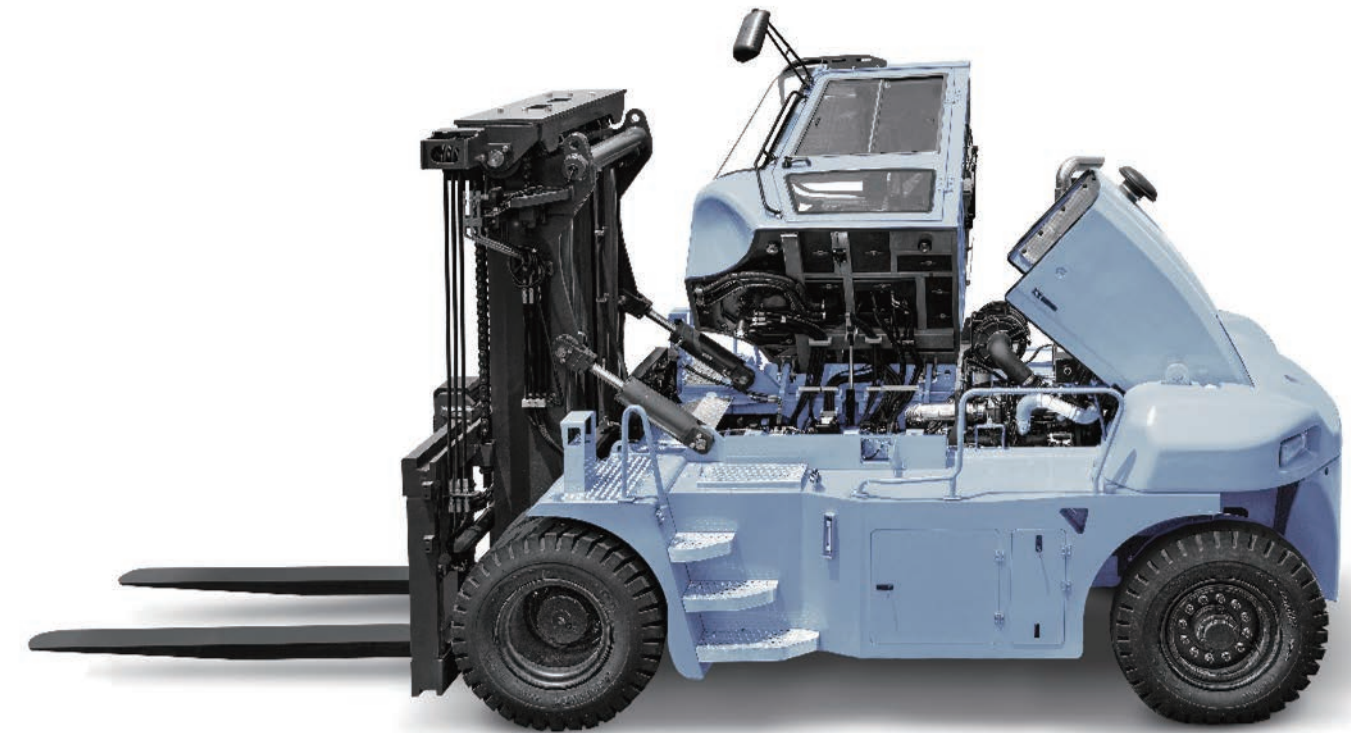
ENDURING AND DURABLE

Durable structure design



Easy liquid adding and check

Cooling liquid adding and check, fuel adding, level check, oil-water separator replacement, engine oil adding and check and hydraulic oil level check become easier.



Easy and high efficient daily inspection

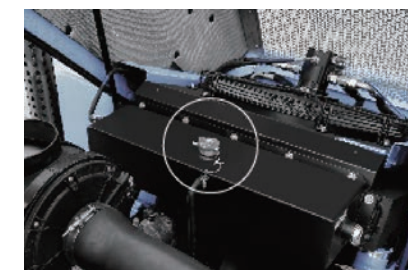
Cab electric tilting system

Automatic tilting system facilitates interior maintenance; Hydraulic drives tilting cylinder with electric assistance making cab tilt 60° right ward which makes maintenance easy.



Engine hood with large opening angle

Open type engine hood which can be open through two self-lock spring ensures easy and high efficient maintenance.



Easy cooling liquid adding and check



Easy hydraulic oil level and quality (hydraulic oil level gauge)



Easy fuel adding and check



Easy oil-water separator replacement and maintenance
Easy engine oil adding and check

Improved protection performance

Oil cylinder protection sleeve

Electric tilting button with high dust-proof and water-proof degree

Improved harness protection degree

Dust-proof and water-proof plus and sockets

Dust-proof vent

High strength aluminum plate fin type radiator

Improved fuel pipe safety degree

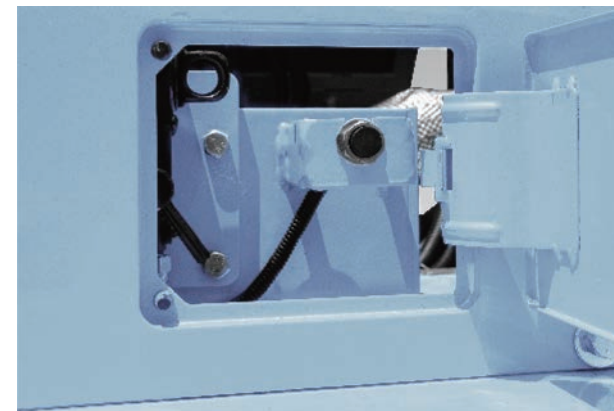


High strength fin type structure will not deform or crack easily.

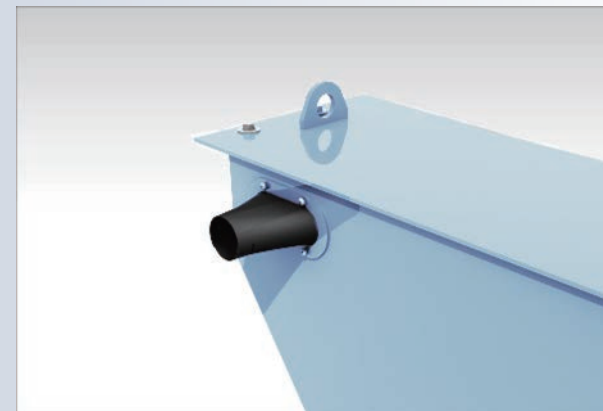
Exterior injection molding treatment --- anti-corrosion and oxidation resistance.



Oil cylinder protection sleeve(optional): it is used to protect cylinder damaged from foreign matters



Electric tilting button with high dust-proof and water-proof degree: protecting degree:IP67



Dust-proof sleeve for electric cabinet



Molding steel pipe is used for oil suction pipe improving safety degree largely.



Front axle dust proof vent



Transmission box dust proof vent



Dust proof and water proof sockets and plugs: protection degree IP65



Harness meets German standard and its temperature resistance ability is largely improved (-40°C-105°C)

Improved cooling efficiency

Optimal designed channel
Reasonable layout of radiator's fins
Optimal designed fan



Optimal designed channel

Optimal designed radiator and channel make cooling system have small resistance, avoid air flowing back effectively and improve cooling efficiency.



Optimal designed fan

Axial fan with multiple blade, enough blast capacity and pressure and consume power is special for G series based on a large number of comparative tests.

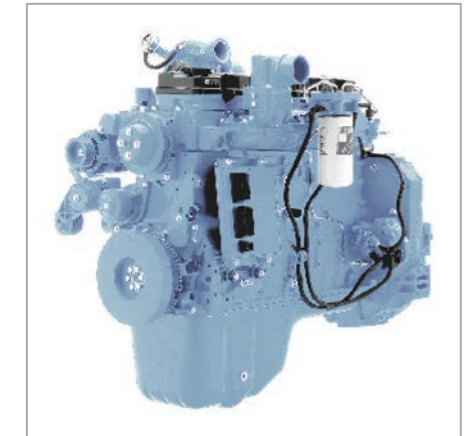


ENERGY SAVING AND ENVIRONMENT FRIENDLY

High efficient matching, forceful power

Cummins OSB6.7 engine

Six cylinder four stroke turbocharged engine which is powerful, reliable, and economic and meets China III is assembled on the truck.



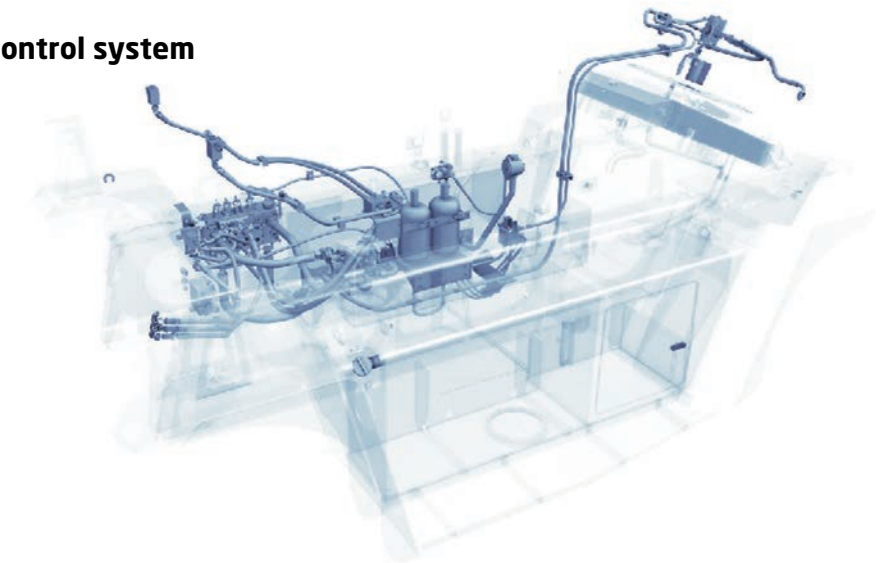
ZF transmission box

Smooth gear shifting without shock.
Intelligent gear shifting mode is easier.
High efficient power match is more energy saving.



Hydraulic dynamic load variable control system

It can adjust oil pump displacement automatically according to operator habit and load condition to achieve high precision flow control and energy saving.



Intelligent sensitive thermal management system

Four in one compound radiator effectively integrates resource and saves space.

Real time thermal managing system monitors cooling medium temperature curve of the completed truck and fan multilevel speed changing is achieved.

The truck is heated quickly in winter and in summer, the system power consumption is more reasonable.

The system saves 10% of the energy and consumption in low temperature area is 15% reduced.

Better matching design; multilevel fan speed, outstanding noise reducing effect.



Light type design

Rear counter weight has no air channel and counter weight use ratio is 5% increased and thus truck service weight is reduced.

Light type design optimizes structure and the truck is lighter and more stable.



Counter weight no air channel design

Special cooling system layout and temperature control system are adopted on G series truck. rear counter weight has no air channel and counter weight use ratio is increased and thus truck service weight is reduced.

Light type design

Application of high strength material.

Years of data accumulation and accurate CAE analysis.

Constant structure optimization.

Intelligent sensitive thermal management system

Electric control system

Real time thermal managing system monitors cooling medium temperature curve of the completed truck to control fan speed.

Hydraulic system

Fan is powered by separated power which is different from traditional direct connection fan to achieve fan multilevel speed changing.

Cooling system

Four in one compound radiator; optimized air channel and fan the air duct and the fan.

COMFORT AND CONVENIENT

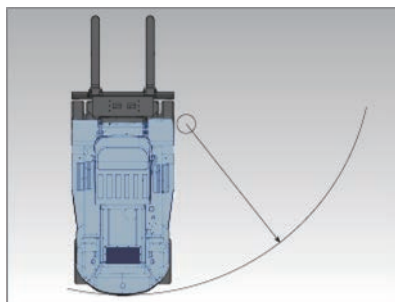


Easy get on-off

Large getting on off pedal and handrail
Open type steps make easy and safe get on-off.

Anti-skid pedal
Anti-skid aluminous pedal has good anti-skid performance

Auxiliary handrail
Solid and durable



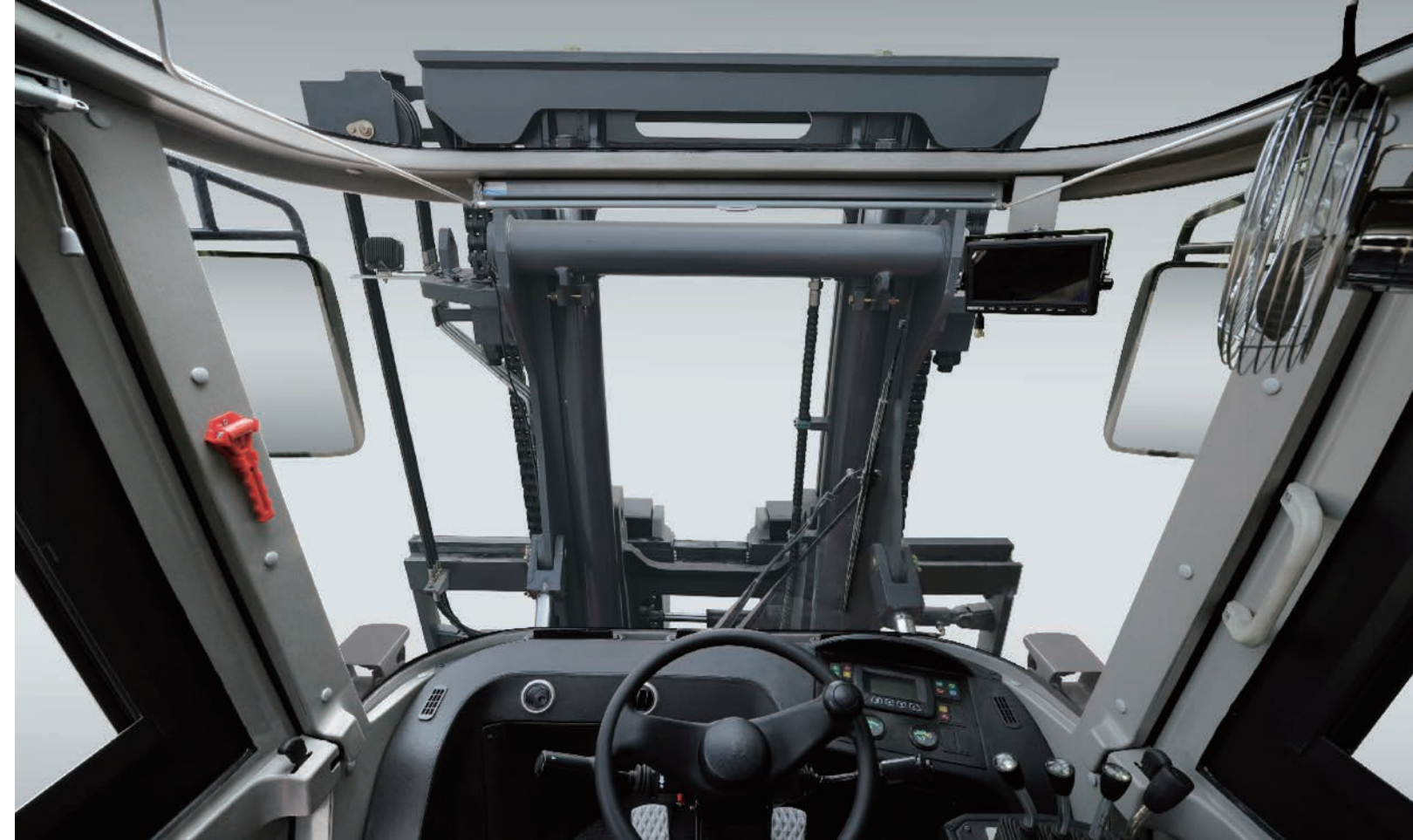
Smaller turning radius

Smaller turning radius
Compact frame design
Optimized steering angle



Mast lower buffering

Mast lower buffering
Reduce the shock when lowering



Superior view

Superior front view
Front glass with large arc is used and front view field angle is 10° increased.

Superior top view
Large glass is used on the top of cab.

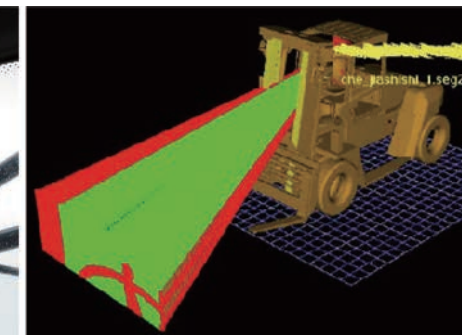
Superior rear view
1200mmx900mm glass is used at the rear end of cab.

Glass for left and right side window
4 pieces of glass is used on left and right door to ensure 360° view.

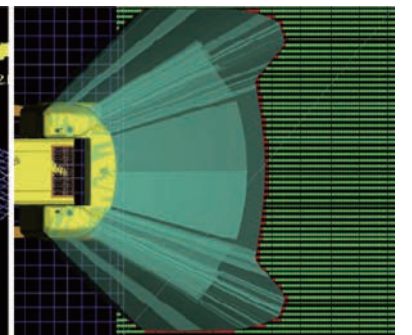
Professional ergonomics view analysis



Rear vision system (optional)
truck real time rear view can be displayed when backward.



Front view check



Rear view check



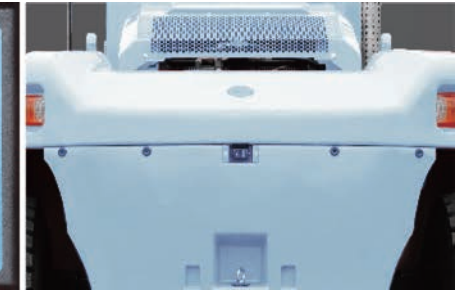
Moveable dashboard

Most reasonable relative position is set between dashboard and seat SIP point through optimized ergonomic and multiple test. Dashboard and seat can be moved together to meet different driving needs.



Weighting system(optional)

Weight can be measured accurately through checking hydraulic pressure.



Backward radar(optional)

Monitor is achieved through reasonable distributed 6 points. Larger monitoring range



Fully suspension seat

Adjustable damping shock reducing design not only bears your weight but also provides steady driving experience.



Adjustable steering wheel

Steering wheel can be adjusted according to operator habit and easy and flexible steering largely reduces your work.

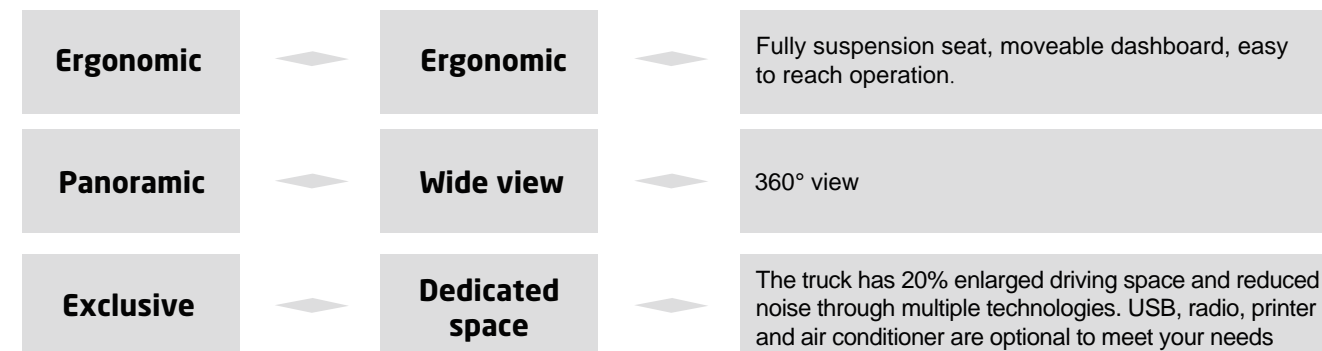


Pedal optimized layout

Optimized pedal reduces fatigue during long time working.

More comfort driving experience

special cab with 360°view



Temperature control system through multiple channel

Fully sealed cab controls temperature in the cab high efficiently and multiple channels cross ventilation keep the temperature in the cab stable winter.



Flexible control knob

Accurate, safe and effective control can be achieved through small operation force.

SAFE AND HIGH EFFICIENT



Better stability

Smaller front overhang
More compact mast structure

Retroposition of center of gravity
Retroposition of power system
Retroposition of cooling system
No air channel on the balance weight

OPS

OPS for the whole truck (optional)

Truck power will be cut automatically and the truck can not be operated when operator is away from seat.

OPS system for mast (optional)

The mast is locked and can not be operated when operator is away from seat.



Wet type drive axle



Maintenance free

Specially designed structure and brake principle provides anti-dust and anti-water function and saves your maintenance cost.

Safe and reliable brake

Working requirements such as Long time, high duty, short distance or frequent brake can be satisfied.



High efficient working

High efficient operation

Hydraulic pilot long distance control provide high operation accuracy and quick response.

Integrated dashboard makes operation easy.

Reasonable ergonomics layout provides you human-machine friendly operating experience.

Mast lifting and lowering speed is 5% increased

High efficient performance

Faster working speed

Better gradeability

Forceful power output provides truck better acceleration performance and gradeability.



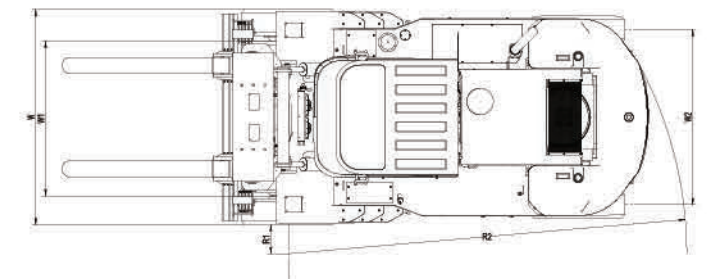
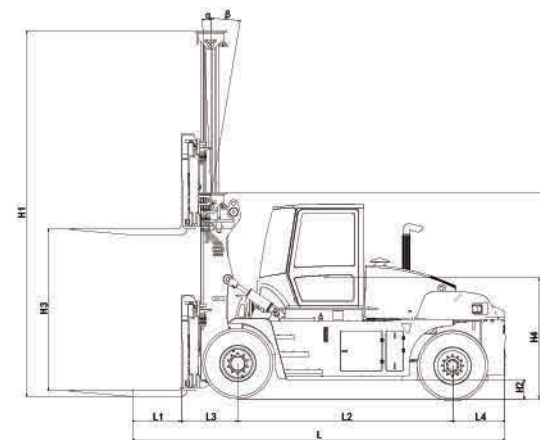
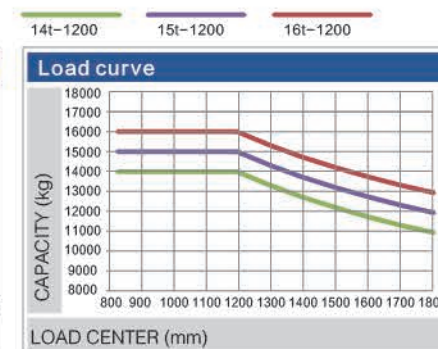
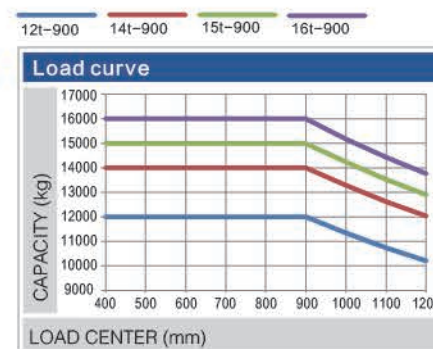
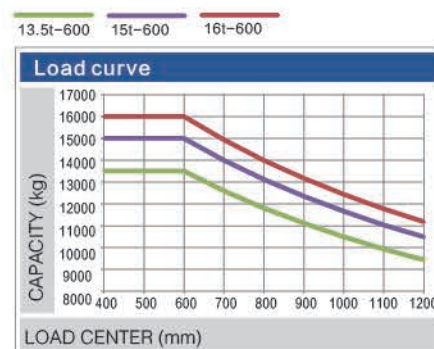
TECHNICAL PARAMETERS

Technical parameters

01	Model	Unit	H120-09	H135-06	H150-06	H160-06	H140-09	H150-09	H160-09	H140-12	H150-12	H160-12
02	Rated load	t	12	13.5	15	16	14	15	16	14	15	16
03	The mass	kg	17800	17800	18400	18800	20500	21000	21500	21400	22200	23000
04	Maximum lifting	mm/s	360/380	360/380	350/380	350/380	370/400	370/400	370/400	370/400	370/400	370/400
05	Maximum speed (loaded/unloaded)	km/h	24/26	24/26	25/27	25/27	26.2/27.3	26.2/27.3	26.2/27.3	26.5/27.6	26.2/27.3	24.3/26
06	Gradeability (loaded/unloaded)	%	36.4/40	36.4/40	36.4/40	36.4/40	36.4/40	36.4/40	36.4/40	36.4/40	36.4/40	36.4/40
07	Noise in the cab	dB(A)	≤73.8	≤73.8	≤73.8	≤73.8	≤73.8	≤73.8	≤73.8	≤73.8	≤73.8	≤73.8

Size parameters

01	Model	Unit	H120-09	H135-06	H150-06	H160-06	H140-09	H150-09	H160-09	H140-12	H150-12	H160-12
02	Overall length		6705	6255	6265	6265	7105	7105	7105	7975	7975	7975
03	Overall width	mm	2560	2560	2560	2560	2560	2560	2560	2560	2560	2560
04	Overall height	mm	3365	3365	3380	3380	3340	3340	3340	3340	3340	3340
05	Load center distance	mm	900	600	600	600	900	900	900	1200	1200	1200
06	Wheelbase	mm	3250	3250	3250	3250	3500	3500	3500	3750	3750	3750
07	Front overhang	mm	785	785	795	795	935	935	935	935	935	935
08	Rear overhang	mm	850	850	850	850	850	850	850	850	850	850
09	Minimum underground clearance	mm	285	285	285	285	285	285	285	285	285	285
10	Seat height	mm	1970	1970	1985	1985	1985	1985	1985	1985	1985	1985
11	Turning radius (inside)	mm	220	220	220	220	220	220	220	220	220	220
12	Turning radius (outside)	mm	4450	4450	4500	4500	4750	4750	4750	5100	5100	5100
13	Front track	mm	1888	1888	1888	1888	1895	1895	1895	1895	1895	1895
14	Rear track	mm	2120	2120	2120	2120	2120	2120	2120	2120	2120	2120
15	Mast height (retracted/extended)	mm	3365/4865	3365/4865	3380/4880	3380/4880	3340/4840	3340/4840	3340/4840	3340/4840	3340/4840	3340/4840
16	Mast lifting height	mm	3000	3000	3000	3000	3000	3000	3000	3000	3000	3000
17	Mast tilting angle (forward/backward)	deg	6/12	6/12	6/12	6/12	6/12	6/12	6/12	6/12	6/12	6/12
18	Fork	mm	1820x200x85	1370x200x85	1370x200x85	1370x200x85	1820x200x95	1820x200x95	1820x200x95	2440x200x100	2440x200x100	2440x200x100
19	Fork adjusting range	mm	500-2370	500-2370	500-2370	500-2370	610-2150	610-2150	610-2150	610-2150	610-2150	610-2150



CONFIGURATIONS




Vehicle configuration												
01	Truck model	Truck model	H120-09	H135-06	H150-06	H160-06	H140-09	H150-09	H160-09	H140-12	H150-12	H160-12
02	Engine	Brand	CUMMINS	CUMMINS	CUMMINS	CUMMINS	CUMMINS	CUMMINS	CUMMINS	CUMMINS	CUMMINS	CUMMINS
	Engine	Model	QSB6.7	QSB6.7	QSB6.7	QSB6.7	QSB6.7	QSB6.7	QSB6.7	QSB6.7	QSB6.7	QSB6.7
	Engine	Rated power (kw/rpm)	129/2200	129/2200	129/2200	129/2200	149/2200	149/2200	149/2200	149/2200	149/2200	149/2200
	Engine	Rated torque (nm/rpm)	881/1300	881/1300	881/1300	881/1300	990/1500	990/1500	990/1500	990/1500	990/1500	990/1500
	Engine	Emission standard	EU Stage V/T4F/China Stage IV	EU Stage V/T4F/China Stage IV	EU Stage V/T4F/China Stage IV	EU Stage V/T4F/China Stage IV	EU Stage V/T4F/China Stage IV	EU Stage V/T4F/China Stage IV	EU Stage V/T4F/China Stage IV	EU Stage V/T4F/China Stage IV	EU Stage V/T4F/China Stage IV	EU Stage V/T4F/China Stage IV
03	Transmission	Model	ZF 131	ZF 131	ZF 131	ZF 131	ZF171	ZF171	ZF171	ZF171	ZF171	ZF171
04	Drive axle	Model	Meritor drive axle	Meritor drive axle	Meritor drive axle	Meritor drive axle	Kessler	Kessler	Kessler	Kessler	Kessler	Kessler
05	Tire	Size	11.00-20	11.00-20	12.00-20	12.00-20	12.00-20	12.00-20	12.00-20	12.00-20	12.00-20	12.00-20
06	Auxiliary configuration	Backward radar	●	●	●	●	●	●	●	●	●	●
	Auxiliary configuration	Backward image	●	●	●	●	●	●	●	●	●	●
	Auxiliary configuration	Weighting system	○	○	○	○	○	○	○	○	○	○
	Auxiliary configuration	Ops for the whole truck	○	○	○	○	○	○	○	○	○	○
	Auxiliary configuration	Ops for mast	○	○	○	○	○	○	○	○	○	○
07	Hydraulic system	Consistent rate system	●	●	●	●	/	/	/	/	/	/
	Hydraulic system	Variable system	/	/	/	/	●	●	●	●	●	●
08	Air conditioner	Air conditioner	●	●	●	●	●	●	●	●	●	●
09	Tyre	Pneumatic tyre	●	●	●	●	●	●	●	●	●	●
	Tyre	Solid tyre	○	○	○	○	○	○	○	○	○	○
	Tyre	Solid tyre(front), pneumatic tyre(rear)	○	○	○	○	○	○	○	○	○	○
	Tyre	Pneumatic tyre(front), solid tyre(rear)	○	○	○	○	○	○	○	○	○	○
10	Cab	Tilting cab	●	●	●	●	●	●	●	●	●	●

Our products are subject to the improvements and changes without notice.

The picture in the brochure may not be the standard model of this type.
The configuration and color of the product in the picture may be different from the actual machine. Please adhere to the actual machine.

CONFIGURATION

Mast

	<p>Standard type mast</p> <p>it is suitable for normal working condition. It has changeable tread and high fatigue resistance ability.</p>
	<p>Two-stage full free mast</p> <p>It is suitable for narrow working conditions in doors, cabin and dwarf door. Extraposition lifting cylinder provides better view.</p>
	<p>Three-stage full free mast</p> <p>The truck has larger lifting height and lower truck height and thus it is safer.</p>

Royal smart fleet management system

- Vehicle positioning
- Remote diagnosis
- Remote monitoring
- Maintenance reminder
- Statistical form
- Vehicle management
- Identification recognition (optional)
- Weight management (optional)



Attachments

	<p>Fork positioner</p> <p>It is easy and quick with two forks adjusting powered by hydraulic.</p>
	<p>Side shifting fork positioner</p> <p>It has both space adjusting and side shifting functions to improving working efficiency.</p>
	<p>Side shifter</p> <p>Side shifting and space adjusting function are separated from each other to achieve quick respond.</p>
	<p>Fork extension</p> <p>It effectively extends fork and it is suitable for large size handling.</p>
	<p>Carpet boom</p> <p>It is suitable for roll type goods such as steel roll, wire roll and so on.</p>
	<p>Crane jib</p> <p>It is safe and high efficient to lift goods.</p>
	<p>Slings</p> <p>It is suitable for goods in bundle such as rebar, steel tube and so on.</p>